

Reimagining Shipping for Businesses Running Sage X3

Thank You
For Joining Us



PROCESSWEAVER
INTEGRATED SHIPPING

Working with Today's Shippers

What are today's shippers looking for when considering an investment in a new transportation execution system?

Elimination of Disjointed Systems

Shippers are looking for a single source solution that eliminates the need for multiple systems and manual processes



Sage X3 Integration

Shippers want to leverage their investment in Sage X3 with "painless integration" of business add-ons



Global Carrier Compliance

Shippers are looking for shipping technology that does not limit their global expansion or the modes of transportation they use.



Rich & Flexible Functionality

Shippers are looking for more than just rates, labels, and documents. They want a solution that flexes with the changing conditions of their business.



Saving Precious Transportation Dollars

Dollars

Shippers are always looking for ways to reduce transportation spend, whether than be through automation to reduce labor costs, or freight shopping or best way routing to reduce freight costs.



How We Help Businesses

Single Source solution to help you manage the complexities of multi-carrier shipping

Carrier Compliance

Multi-modal rating and rate shop across all your carriers for least costly or best way routing & shipping



Freight Forwarder Mgmt.

Electronically communicate with your freight forwarders, consolidators, and key trading partners



Integration with Sage X3

Our landscape native technology allows you to painlessly integrate with a company's Sage X3 ERP system



Labels and Documents

Comply with carrier, customer, and regulatory agencies through effective label & document printing



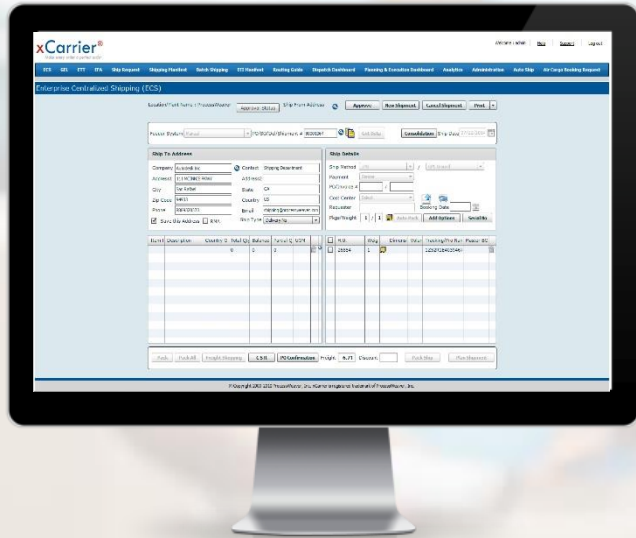
Export Compliance

Electronically file your export information with ACE and other countries regulatory agencies



Single Source Solution

Wouldn't it be great if one system could do all this?



Certified multi-carrier shipping integration with Sage X3

Manage your shipping execution regardless of where in the world you ship from, or ship to?

Support the 2 or 200+ carriers you may be using globally, across all transportation modes?

Extend the ability to rate, ship, and track to any Sage enterprise user.

Multimodal Transportation Execution

Wouldn't it be great if one system could do all this?



Modular Design



Enterprise Centralized Shipping (ECS)



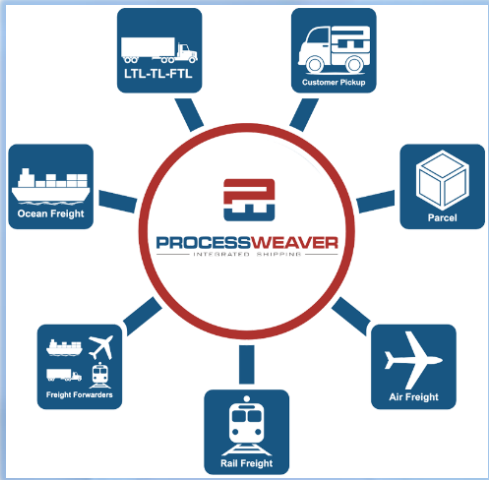
Enterprise Freight Shopping (EFS)



Enterprise Track and Trace (ETT)




Global Trade EEI SED Link (GEL)



Enterprise Address Validation (EAV)



Business Partner Screening (BPS)

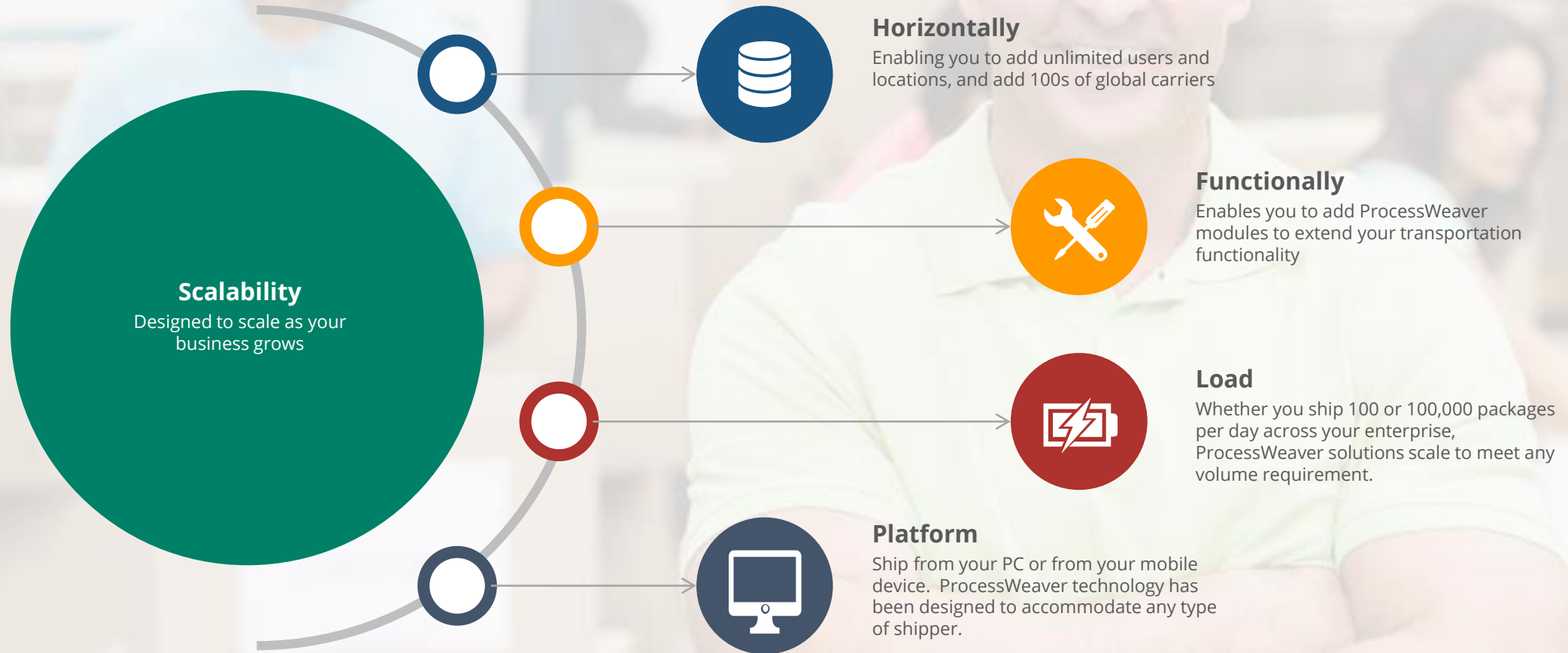


Supplier TMS Portal (STP)

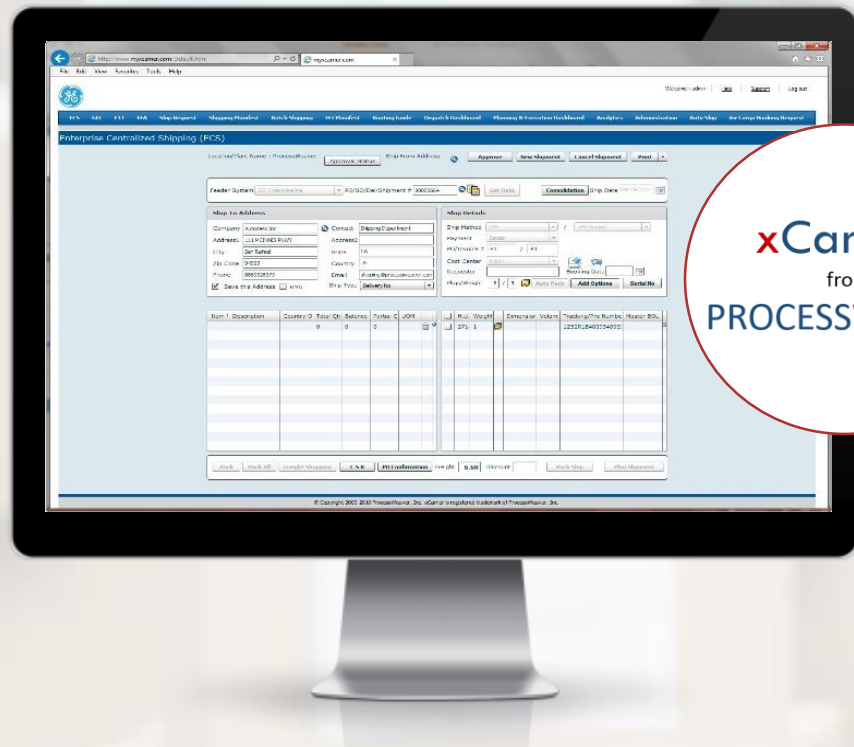


Enterprise Freight Analytics (EFA)

Designed to Scale With Your Business



Enhanced Capabilities



xCarrier®
from
PROCESSWEAVER



Freight Shopping at X3 Order Entry

Allows users to access xCarrier freight shopping capability during the Sage ERP X3 order creation to help select the best way to ship.



Hazardous Material Shipping

Comply with all DOT and IATA requirements for shipping dangerous goods. In addition, print all necessary labels and documents.



Inbound and Outbound Shipping

Shippers are not only able to manage outbound shipping activities, but can also take command and control over inbound shipments from suppliers and trading partners.



Freight Analytics

Robust reporting and analytic tool that allows shippers to tap into the xCarrier Logistics Data Repository (LDR) for shipping, in-transit, delivery, and carrier invoice information.

ProcessWeaver 200+ Carrier Network



Target Market

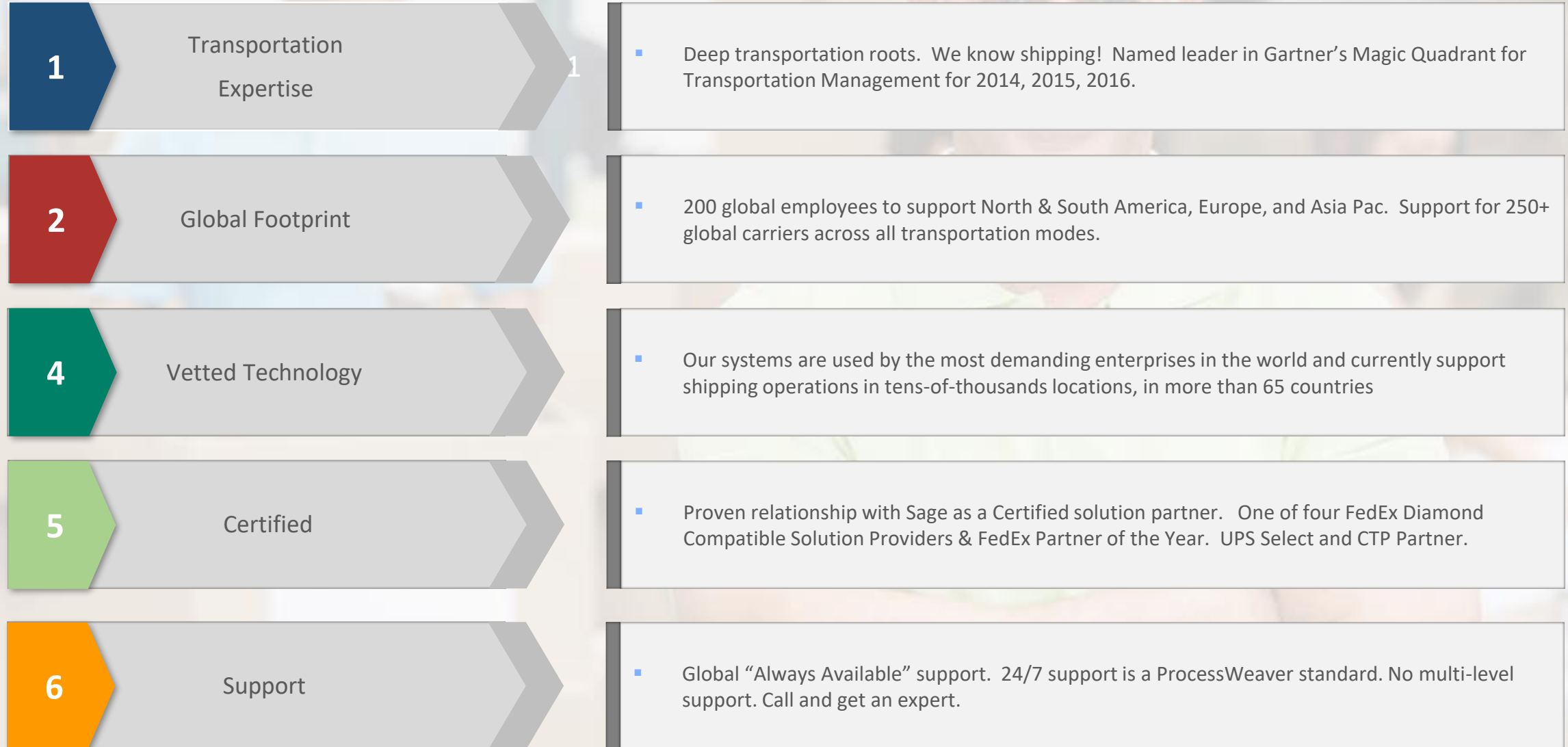
Any company that puts a shipping label on a boxes and boxes on trucks



About ProcessWeaver



How ProcessWeaver is Different



Thank You



Brendan Cosgrove
888.932.8373



5201 Great America Parkway – Ste 300
Santa Clara, CA 95054



brendan.cosgrove@processweaver.com



www.processweaver.com



PROCESSWEAVER
INTEGRATED SHIPPING

